

**Quadrature Hybrid,  
80 - 160 MHz**

**JH-/JHS-119  
V3**

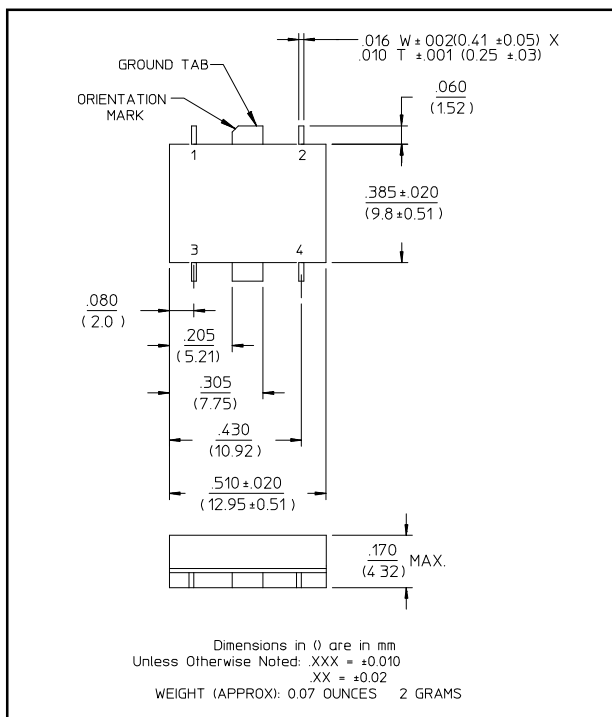
**Features**

- Fully Hermetic Package
- Octave Bandwidth
- Low VSWR: 1.3:1
- Impedance: 50 Ohms Nominal
- Input Power: 4 Watts Max. @ 25°C, Derated to 1 Watt @ 85°C
- MIL-STD-202 Screening Available

**Description**

3 dB Hybrids are ideal for dividing a signal into two signals of equal amplitude and a constant 90° or 180° phase differential and for Quadrature combining or performing summation/differential combining.

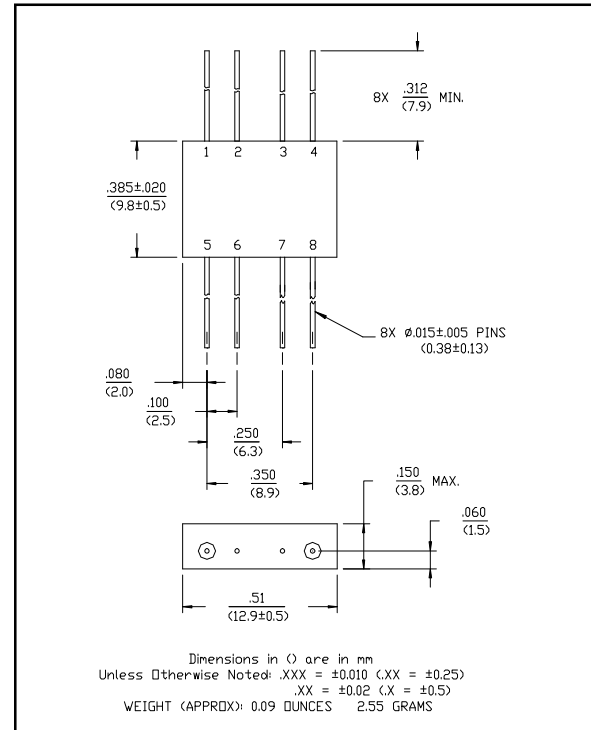
**SF-1 (JHS-119)**



**Pin Configuration (JHS-119)**

Pin No.	Function	Pin No.	Function
1	A	3	D
2	B	4	C

**FP-2 (JH-119)**



**Pin Configuration (JH-119)**

Pin No.	Function	Pin No.	Function
1	A	5	D
2	GND	6	GND
3	GND	7	GND
4	B	8	C

**Quadrature Hybrid,  
80 - 160 MHz**

**JH-/JHS-119  
V3**

**Electrical Specifications<sup>1</sup>: T<sub>A</sub> = -55°C to +85°C**

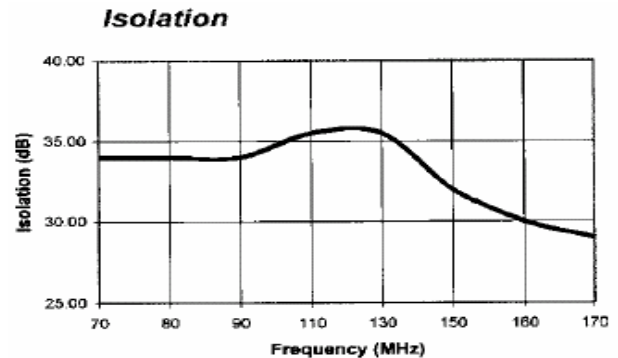
Parameter	Test Conditions	Frequency	Units	Min	Typ	Max
Insertion Loss <sup>2</sup>	Less Coupling	80 - 160 MHz	dB	—	—	0.75
Isolation	—	80 - 160 MHz	dB	20	—	—
Amplitude Balance	—	80 - 160 MHz	dB	—	—	1.0
VSWR	—	80 - 160 MHz	Ratio	—	—	1.3:1
Deviation from Quadrature	—	80 - 160 MHz	°	—	—	3

- All specifications apply with 50 ohm source and load impedance.
  - Average of coupled output less 3 dB.
- This product contains elements protected by United States Patent Number 3,484,724

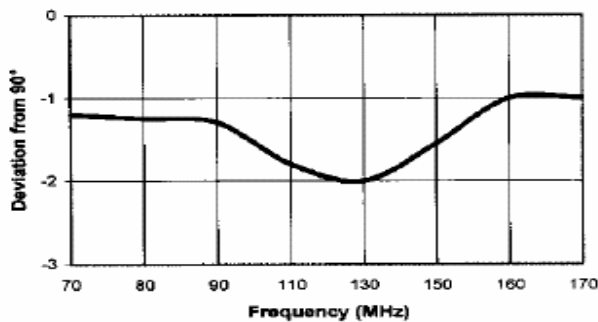
**Phasing Diagram**

OUT \ IN	A	B	C	D
A		ISO	0°	-90°
B	ISO		-90°	0°
C	0°	90°		ISO
D	-90°	0°	ISO	

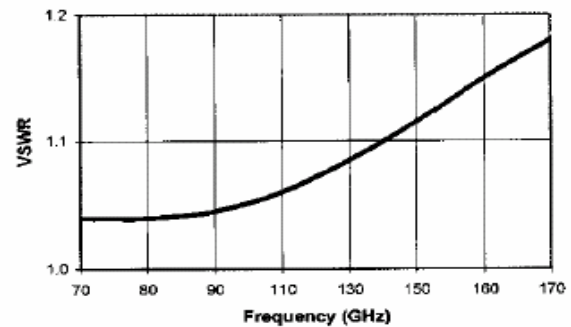
**Typical Performance Curves**



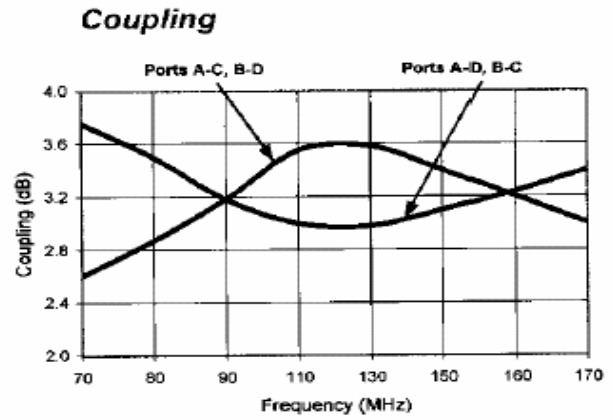
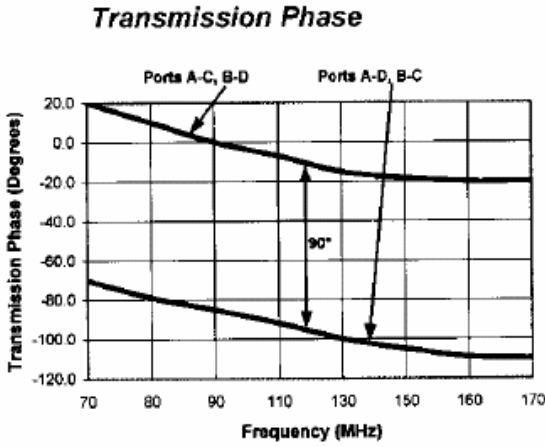
**Deviation from Quadrature**



**VSWR**



**Typical Performance Curves**



**Ordering Information**

Part Number	Package
JH-119 PIN	FP-2
JHS-119 PIN	SF-1